



Software Installation Guide

Hedsam X
v11.0

V1.0

Contents

- 1. Introduction 2
- 2. New License..... 2
- 3. Server License Code..... 2
- 4. Software Installation..... 3
- 5. Installing the License 11
- 6. Checking Installed Files 11
- 7. Troubleshooting..... 12

1. Introduction

Install the Hedsam X software according to these instructions. This guide covers the installation of the Hedsam X software to a new platform. If you want to update an existing system, see the *Update Guide*.

2. New License

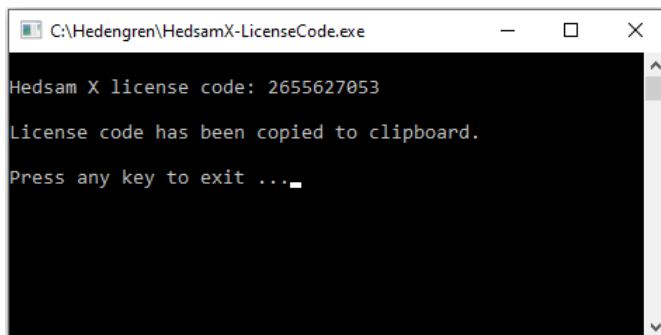
From version 11.0 onwards, the Hedsam X software requires a new license. The licenses for the previous Hedsam X versions are not compatible with the new version. Before you update the software, make sure that you have a license which is compatible with the latest version. The new license is server specific and time-limited. The software begins to notify the user 3 months before the license expiration date. When the license expires, the software disables updates to the database and some of the services, such as the API interface.

3. Server License Code

The new license also checks the license code of the server. To acquire the license code, use the HedsamX-LicenseCode tool.

1. Download the *HedsamX-LicenseCode.exe* tool from the Hedengren Securityn Mediabank.
2. Copy the HedsamX-LicenseCode.exe file to the Hedsam X server where you require the license.
3. Right-click the HedsamX-LicenseCode.exe file and select **Run as administrator**.

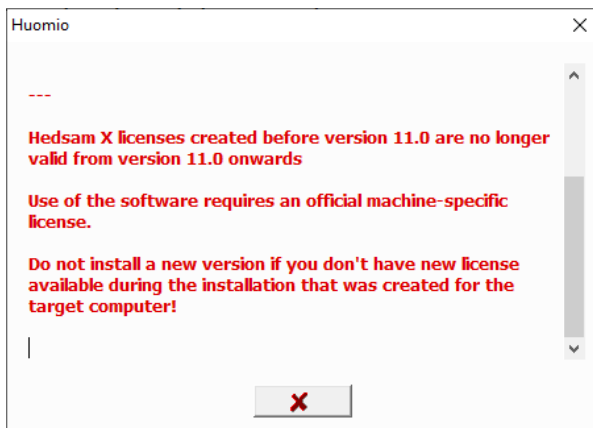
The program starts and displays the 10 digit license code. It also copies the license code to the clipboard so you can paste it, for example, in a Notepad *.txt file or directly in an email, if it is possible from the server.



4. Software Installation

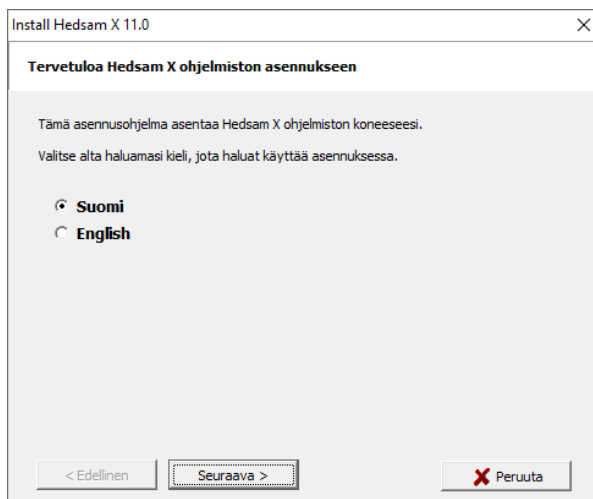
Use the installer to install version 11.0 software.

1. Right-click the installer and select **Run as administrator**.
2. When the installation begins, you receive a notification about the license requirements.

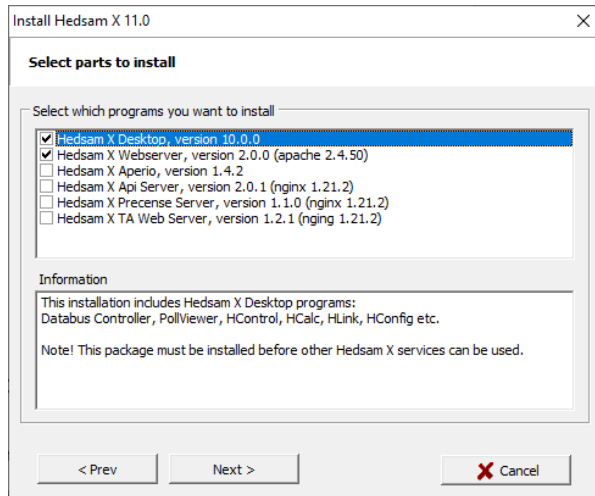


When you have acquired the new license, you can continue the installation.

3. Select the installation language, **Suomi** or **English**.



4. Select the programs you want to install. Only select the programs which you are going to use. Hedsam X Desktop and Hedsam X Webserver are mandatory.

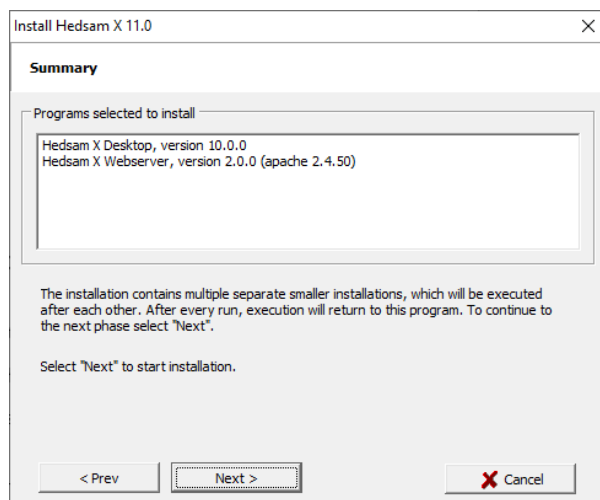


- **Hedsam X Desktop** includes the following programs: Databus Controller, PollViewer, HControl, HCalc, HLink, HConfig ja HConfigDB. (mandatory)
- **Hedsam X Webserver** includes the web user interface. (mandatory)
- **Hedsam X Aperio** is a communication service for Abloy Aperio hubs.
- **Hedsam X API Server** is an interface for external applications, such as Precense Webserver and TA Web Server.
- **Hedsam X Precense Server** is a presense table, which shows the person's status based on work time registration or control group information.
- **Hedsam X TA Web Server** serves the mobile application.

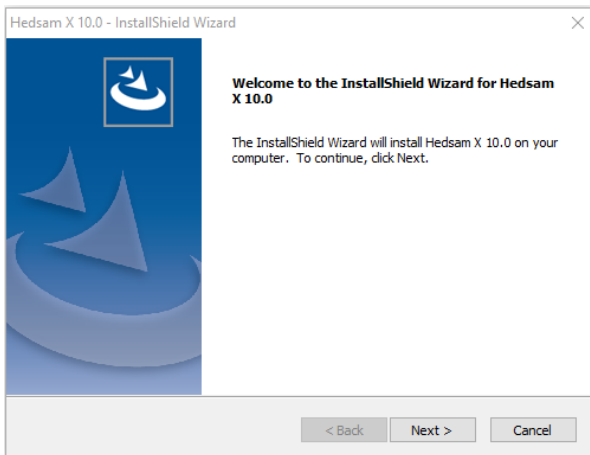
When you have selected the programs to be installed, select **Next**.

5. The summary lists the selected programs.

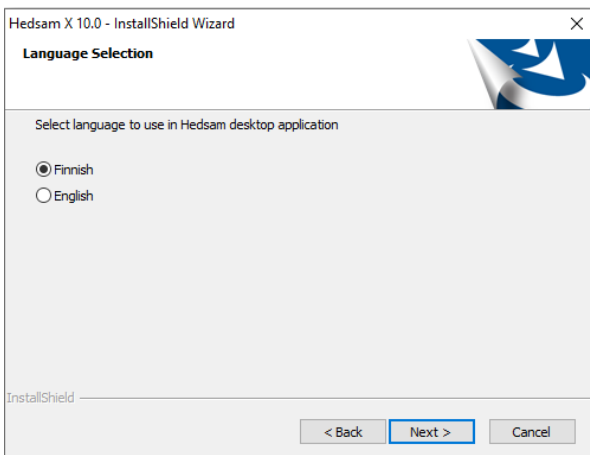
If you are happy with the selection, select **Next**. If you want to modify the selection, select **Prev**. The installer returns to the previous step.



6. The Hedsam X Desktop programs are installed first. Follow the instructions and read the help texts in the installer window. Select **Next**.

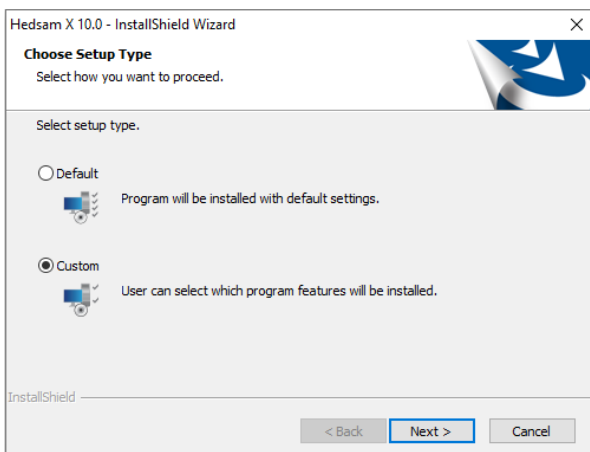


7. Select the language for the Hedsam X Desktop programs (**Finnish** or **English**) and select **Next**.



Note! Once the program is installed, you must reinstall the program to change the language setting.

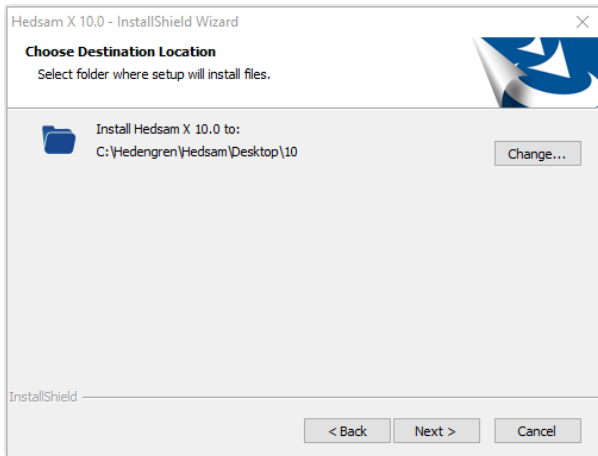
8. Select the setup type, **Default** or **Custom**.



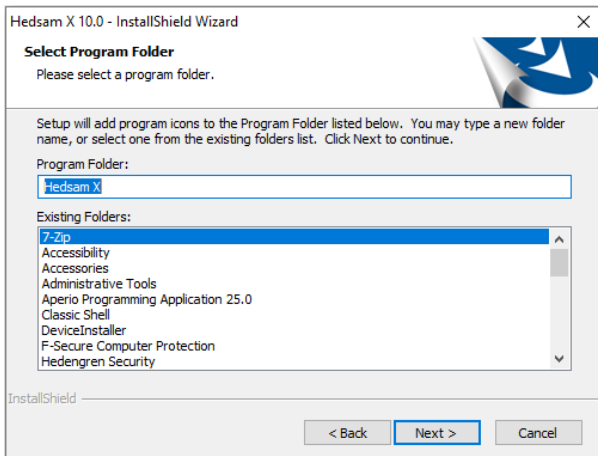
- The **Default** option installs all the programs with default settings. The programs are installed in the following directory with the settings reset for all the services to be installed:
C:\Hedengren\Hedsam\Desktop\10\.
- The **Custom** option allows you to select a different installation directory on the server and select whether the settings for the services are reset.

The recommendation is to use the **Default** option. When you have selected the setup type, select **Next**.

9. Select the installation directory. To modify the directory, select **Change**. To use the default directory (recommended), select **Next**.

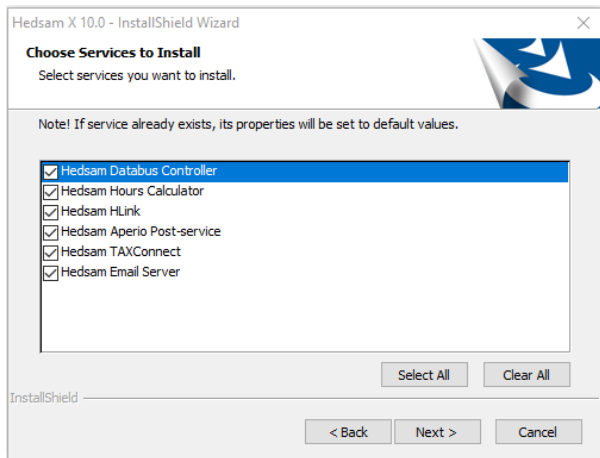


10. Select the name for the program folder. To modify the name, type the new name in the **Program Folder** field. To keep the default name (recommended), select **Next**.

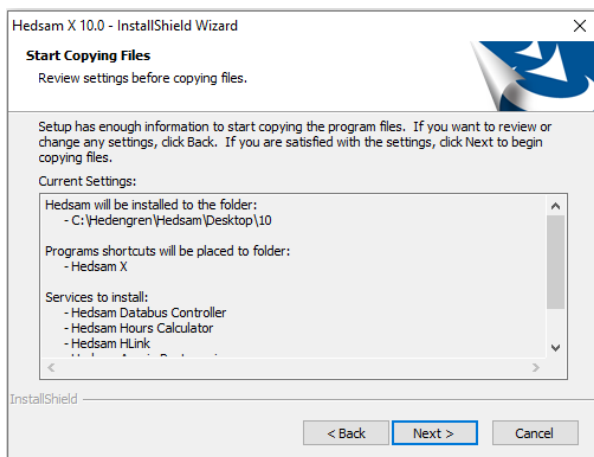


11. Select the services to install. You can select all the services, even if all of them are not used. The recommendation is to reinstall all the services. When you have selected the services, select **Next**.

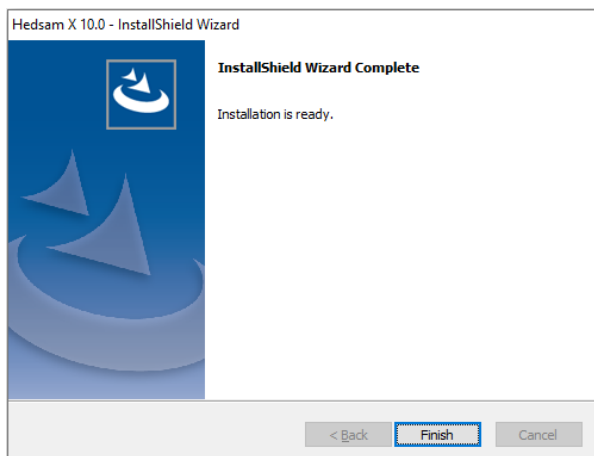
All the selected services are installed with default settings and manual startup mode. Modify the service settings after the update is complete.



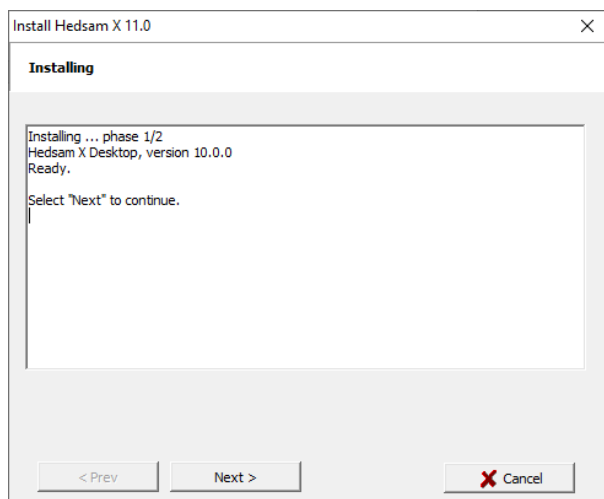
12. The summary lists the selected settings. If you want to modify the settings, select **Back**. If you want to begin the software installation, select **Next**.



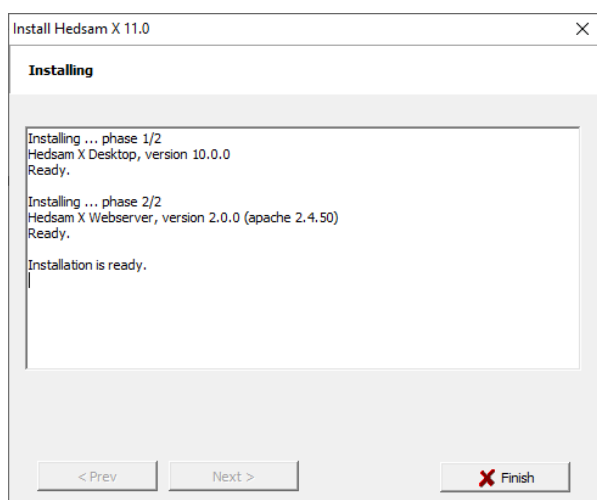
13. The installer notifies when the Hedsam X Desktop installation is ready. Select **Finish** and wait a moment. The installation of the next part begins.



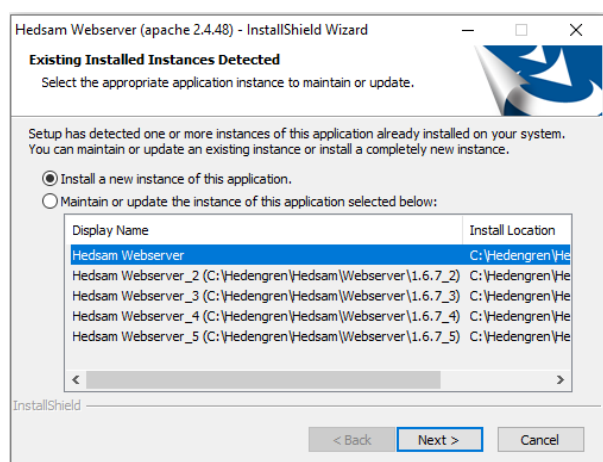
14. To continue the installation, select **Next**.



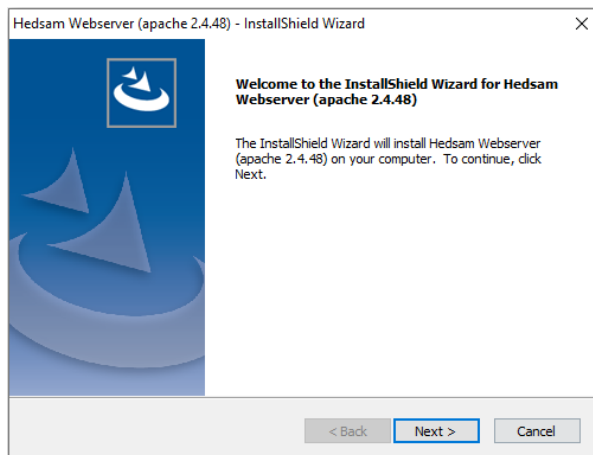
15. The installer begins the next phase of the installation.



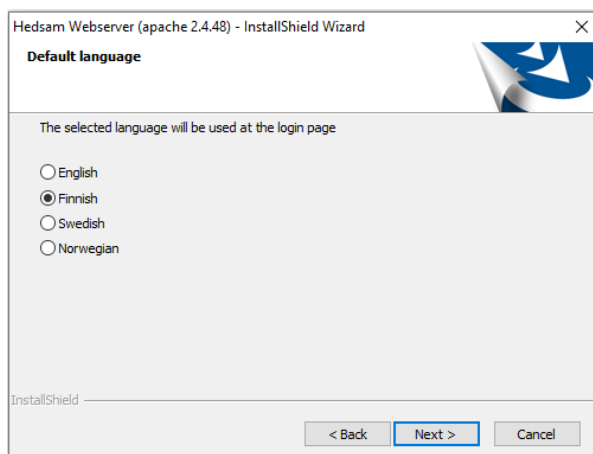
16. Select if you want to install a new instance of the Hedsam X Webserver user interface or update the existing installation. The recommendation is to install a new instance. Select **Next**.



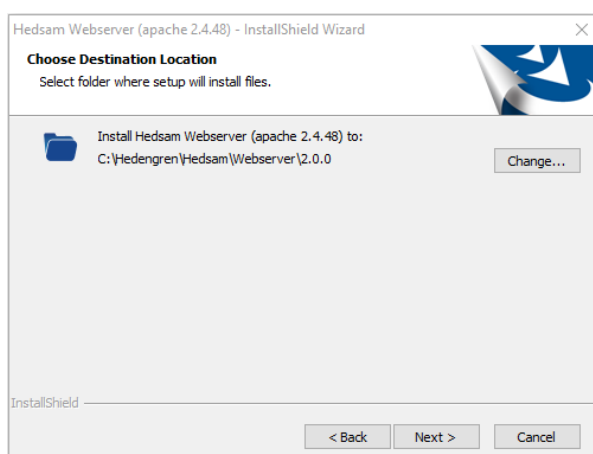
17. Next the installer installs the Hedsam X Webserver user interface. Follow the instructions and read the help texts in the installer window. Select **Next**.



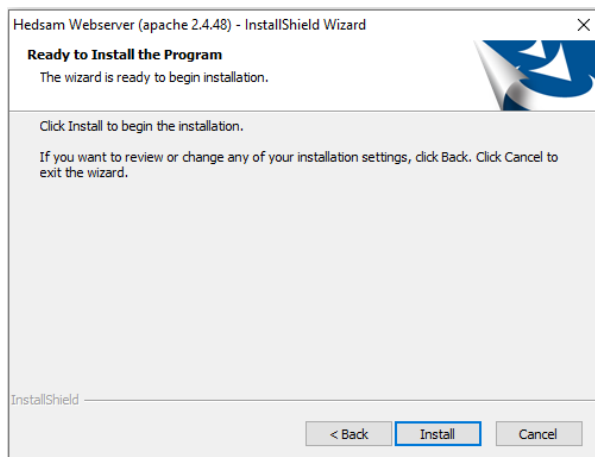
18. Select the language used on the login page of the web user interface, and select **Next**.



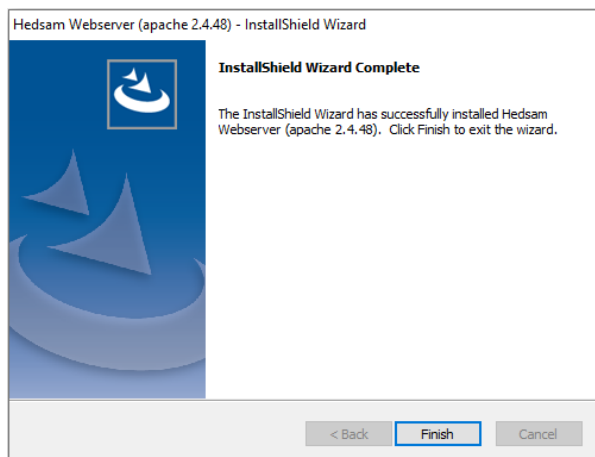
19. Select the installation directory. To modify the directory, select **Change**. To use the default directory (recommended), select **Next**.



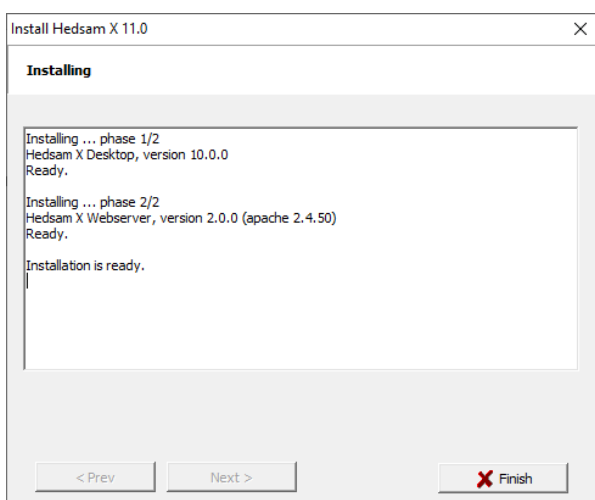
20. If you want to modify the settings, select **Back**. If you want to begin the software installation, select **Install**.



21. The installer notifies when the Hedsam X Webserver user interface installation is ready. Select **Finish** and wait a moment.















22. If you selected other programs to install in step 4, select **Next**. Otherwise the installation is complete and you can select **Finish**.



5. Installing the License



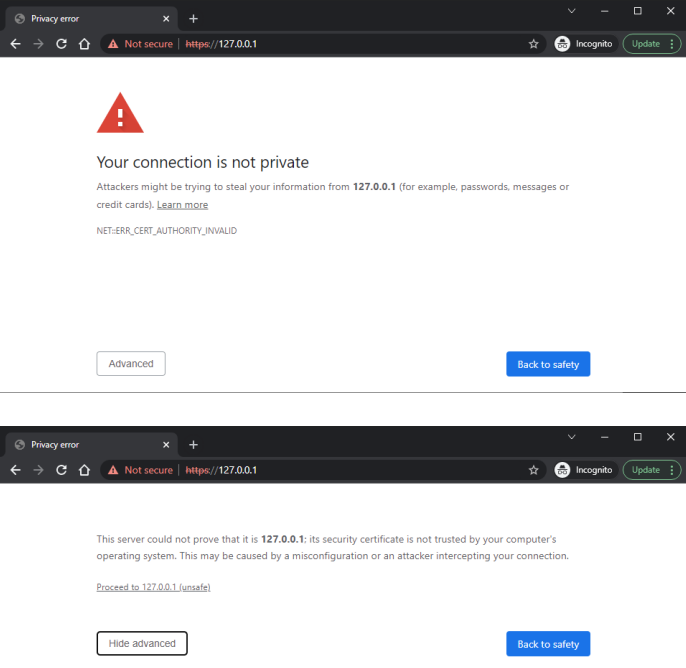
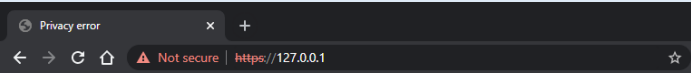
Copy the new license file *hedsam.license* to the following directory: *C:\Hedengren\Hedsam\Desktop\10*.

Name	Date modified	Type	Size
 Regist	5.10.2021 7.58	File folder	
 Log	5.10.2021 7.58	File folder	
 Images	6.10.2021 7.42	File folder	
 Hours	5.10.2021 7.58	File folder	
 Event	5.10.2021 7.58	File folder	
 Emails	5.10.2021 7.58	File folder	
 Email_Templates	5.10.2021 7.58	File folder	
 Data	5.10.2021 10.04	File folder	
 Bitmaps	6.10.2021 7.42	File folder	
 hedgraph	8.4.2021 13.49	XML Document	13 KB
 FilesCheck	21.5.2021 10.31	Text Document	3 KB
 hedsam_license	2.1.2019 13.00	LICENSE File	1 KB

6. Checking Installed Files

You can check the installed files with the *FilesCheck* program, which is installed together with the Hedsam X software in the *C:\Hedengren\Hedsam\Desktop\10* directory. *FilesCheck* reports if any crucial part of the system, such as the license file, is missing.

7. Troubleshooting

Question	Answer
<p>Why does the user interface inform me that the license is not installed?</p> 	<p>The license file <i>hedsam.license</i> is not in the <i>C:\Hedengren\Hedsam\Desktop\10\</i> directory.</p>
<p>Why does the user interface inform me that the license serial number is invalid?</p> 	<p>The license file <i>hedsam.license</i> does not contain the correct server license code. Use the <i>HedsamX-LicenseCode.exe</i> tool to acquire the correct license code and order a new license.</p>
<p>Why does the user interface inform me that Your connection is not private?</p> 	<p>The software is delivered with unsigned certificates, and even if you use HTTPS connection, the browser cannot verify the validity of the used (unsigned) certificate. Copy the signed certificates to the web server. See separate instructions for this.</p> <p>You may temporarily allow the connection by clicking Advanced > Proceed to 127.0.0.1 (unsafe).</p>
<p>Why does the user interface inform me that the connection is Not secure?</p> 	<p>The software is delivered with unsigned certificates. To create a safe connection (green lock), copy the signed certificates to the web server. See separate instructions for this.</p>